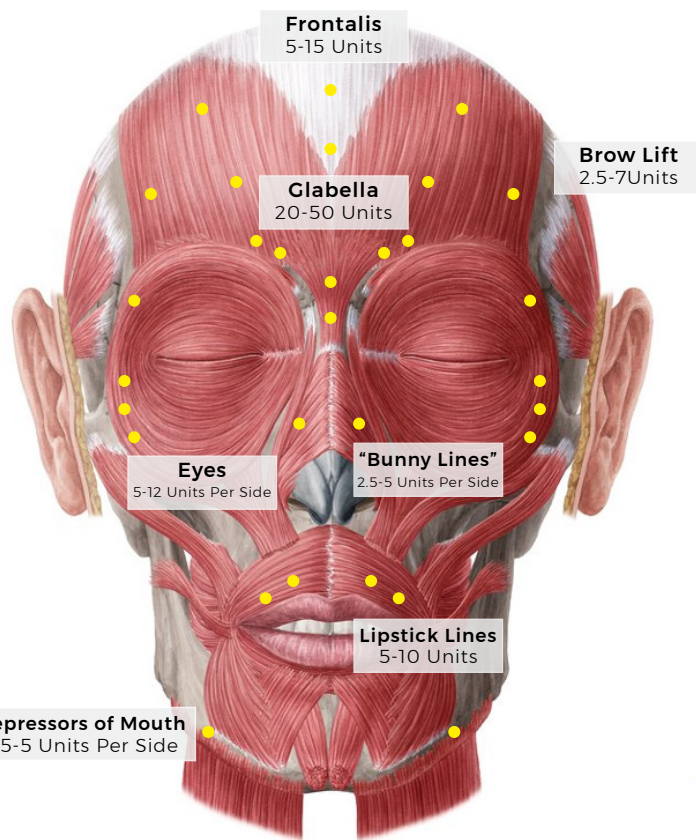
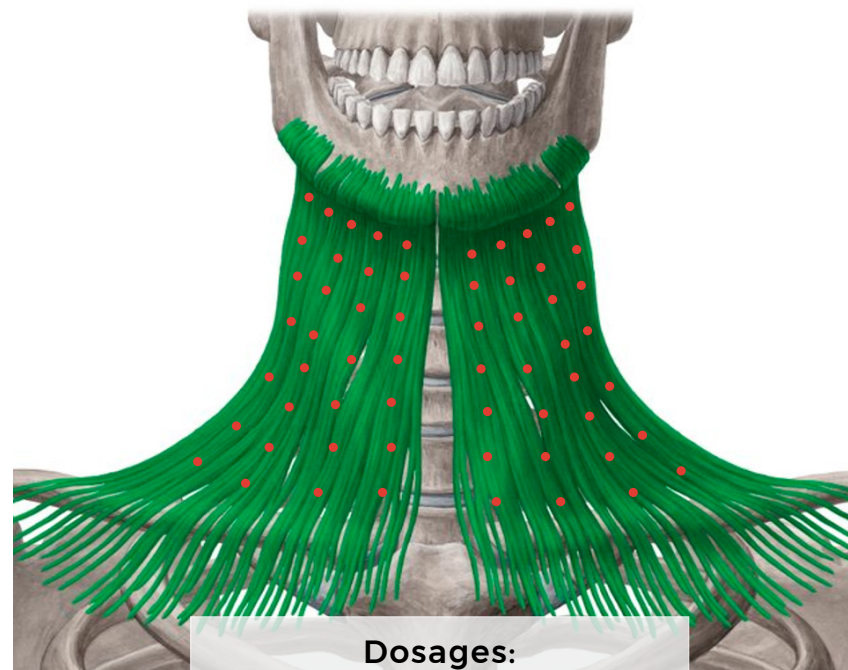


Treatment Protocol

Face



Neck



Dosages:
1-2 Units Per Site



Dosages

Frontalis 5-15 Units

Glabella 20-50 Units

Brow Lift 2.5-7 Units

Eyes 5-12 Units Per Side

“Bunny Lines” 2.5-5 Units Per Side

Lipstick Lines 5-10 Units

Depressors of Mouth 2.5-5 Units Per Side

“Jelly Roll” 1-2 Units

Jawline Slimming 10-40 Units Per Side

“Witch’s Nose” 2.5-5 Units

“Lip Flip” 1-2 Units Per Quadrant

Gummy Smile 2-4 Units Per Side

“Peau d’Orange’ Chin 2-5 Units

Pearls Face

- To avoid “dead smile” look, use the lowest effective amount
- To avoid risk of eyelid ptosis:
 - Administer toxin at least 1 cm above the central eyebrow and 1.5 cm-2 cm from the lateral canthus.
 - Avoid injection near the levator superioris, particularly in patients with larger brows.
 - Medial corrugator injections should be placed no less than 1 cm above the bony supraorbital ridge.
- To avoid risk of lateral brow ptosis
 - Use care when injecting female face lateral to midpupillary line
 - Preserve function in lateral frontalis to a certain extent

Pearls Neck

- Start in the periphery and proceed centrally
- Approximate distribution is 50 units per side
- Inject sitting up
- Inject both muscle cords and the area in between
- Extend injection from the lower jaw all the way to the top of clavicle